

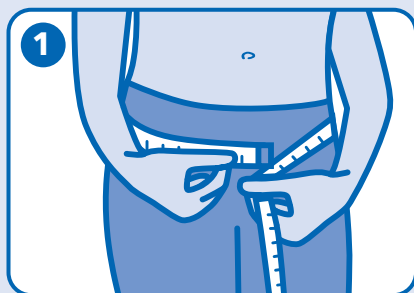


## SLIP CLASSIC

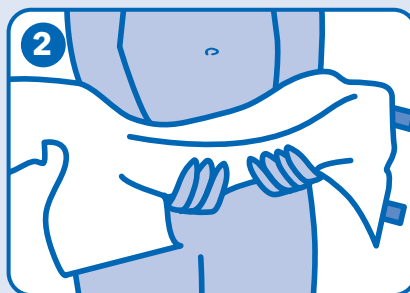
Attends Slip Classic are a range of all-in-one pads designed to manage heavy urinary and/or faecal incontinence.



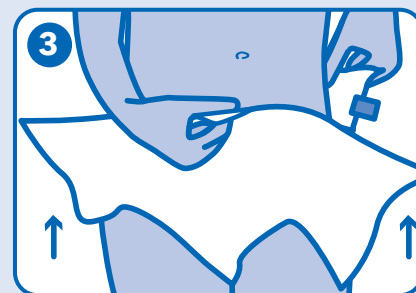
### Fitting Guide



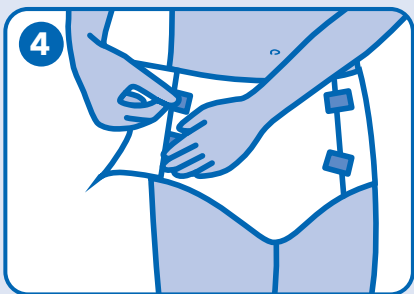
1 To choose the correct size, measure your hips and waist and choose the largest of the two to find your size.



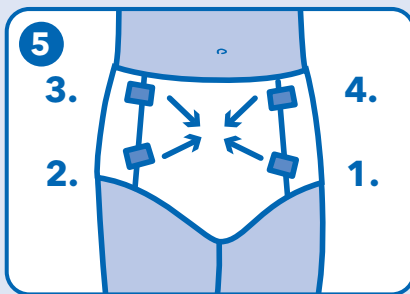
2 Gently fold and cup the pad lengthways to ensure that the leakage barriers stand up.



3 Position the pad between the legs so that it fits snugly to the wearer and that it fits comfortably in the groin area. Use the wetness indicator to help to position and centre the pad.



4 Gently pull the wing around to the front of the pad and fasten the tapes.



5 Fasten the bottom tapes first in an upwards direction to give a close fit around the groin area and then fasten the top tapes in a downwards direction to ensure a snug, comfortable fit. When you remove the Slip lift the white tape off the blue tape.

## SLIP CLASSIC

### Hints and Tips

#### Selection

- Consider selecting Attends shaped pad/pants before using Slips - they offer much greater discretion.
- Choose the Slip according to hip or waist size - whichever is the largest.
- Slips can offer effective management for people who may pull out shaped pads.

#### Fitting

- Before fitting the pad, open the wings separately by unfolding each wing and opening it outwards until all four are fully opened.
- Ensure you keep the ruffles on the flexible leg gathers on the outside of the Slip - this keeps the waterproof backsheet away from the skin.
- Keep the adhesive tapes at the back when fitting the Slip - you then know it is the right way round.
- When fastening the Slip, fasten the bottom tapes first in an upwards direction and then the top tapes in a downwards direction to give a snug, comfortable fit.
- If the product is fitted when the user is laying down follow the same sequence as for fitting the pad in a standing position. To ensure the pad stays in position, place a hand on the back of the Slip when turning the client.
- Use the wetness indicator to centre the whole pad.

#### Changing

- Check the wetness indicator - if the wetness indicator has changed from yellow to blue over half the length of the pad (60%) or if the pad contains faeces the pad requires changing, if not the pad can be reapplied.
- Reseal and reuse the Slip when toileting if the product is clean and dry.
- When you unfasten the tapes the blue tape should remain in place on the product.

#### Leakage

- Check all aspects of fitting and assessment.
- Check that you have the correct size.

#### Disposal

- Roll up pad and dispose as per your local authority waste policy.
- Do not flush the pad down the toilet.



Skin tolerability is dermatologically approved by proDERM Institute for Applied Dermatological Research